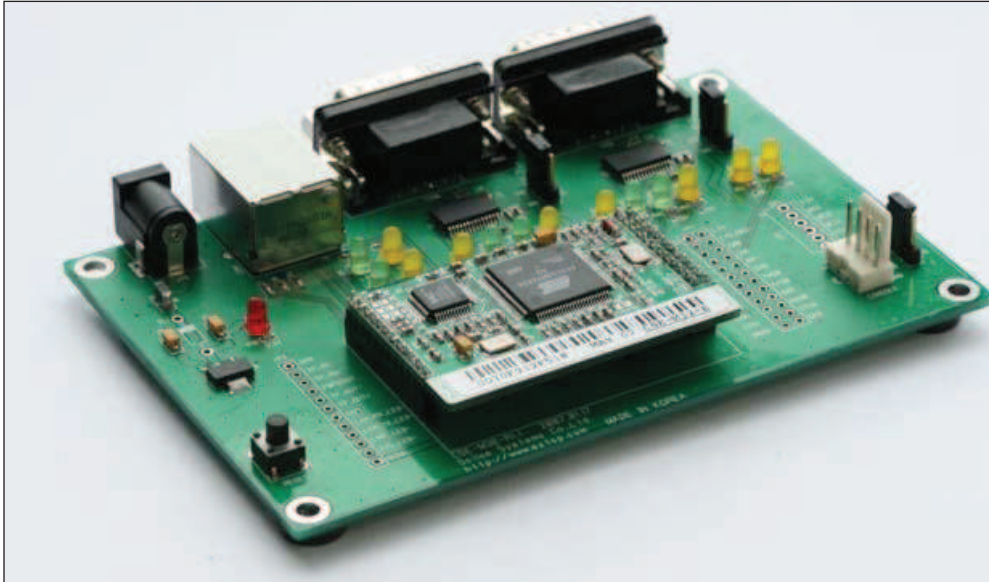


9 The Evaluation Board

9.1 Introduction

This board is for testing the CSE-M32 with an Ethernet interface and 2 RS232 interfaces.



9.2 Connectors

Part	Name	Description
JP6	DC JACK	It supplies the power to the CSE-M32. The input voltage should be 5V. The regulator in the evaluation board regulate the 5V to 3.3V and supplies the 3.3V to the CSE-M32.
CON1	RJ45	10M/100M Ethernet
P1	DB9M	RS232 interface for COM1 (UART0)
P2	DB9M	RS232 interface for COM2 (UART1)
JP3	Header	Alternate port of JP1 of CSE-M32
JP4	Header	Alternate port of JP2 of CSE-M32
JP7	Connector	The console port of CSE-M32. It is for factory but not for customers.
JP8	Header	The SPI port. CSE-M32 doesn't use this port.

9.3 Jumpers and Switches

9.3.1 JP5

It is for ISP of CSE-M32.

Connection	The input signal to the ISP	Description
1-2 short	High	Normal Mode
2-3 short	Low	ISP Mode

When CSE-M32 boots up, it operates as Normal mode when the ISP is high. It operates as ISP mode when the ISP is low.

9.3.2 JP9, JP10

These pins control the outputs of the RS232 line drivers.

Connection	Input value of RS232 driver	Description
1-2 short	High	RS232 driver is active
2-3 short	Low	RS232 driver is inactive (high impedance)

These jumpers are very useful to connect user serial port and CSE-M32 with TTL level directly.

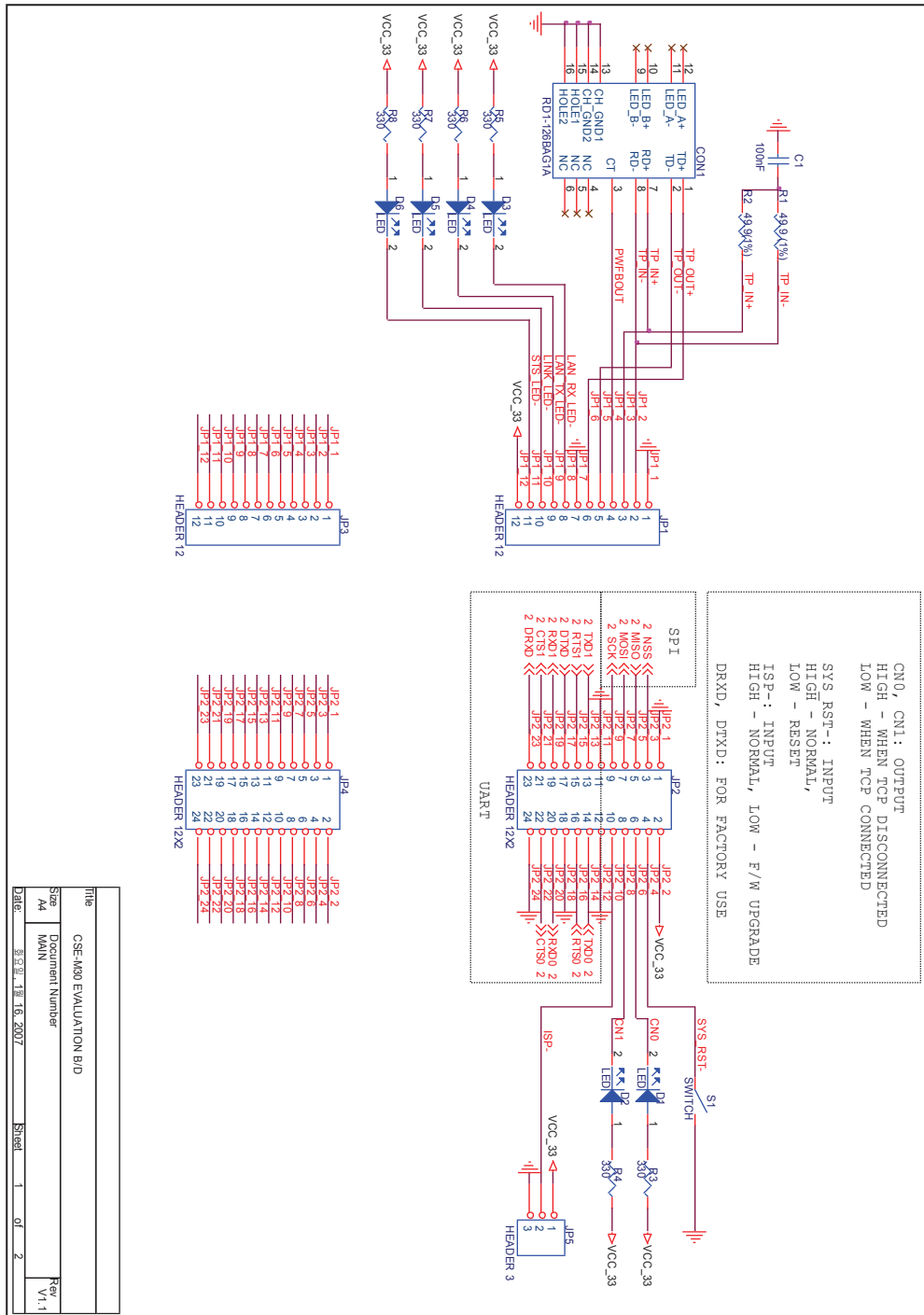
9.3.3 Reset Switch (S1)

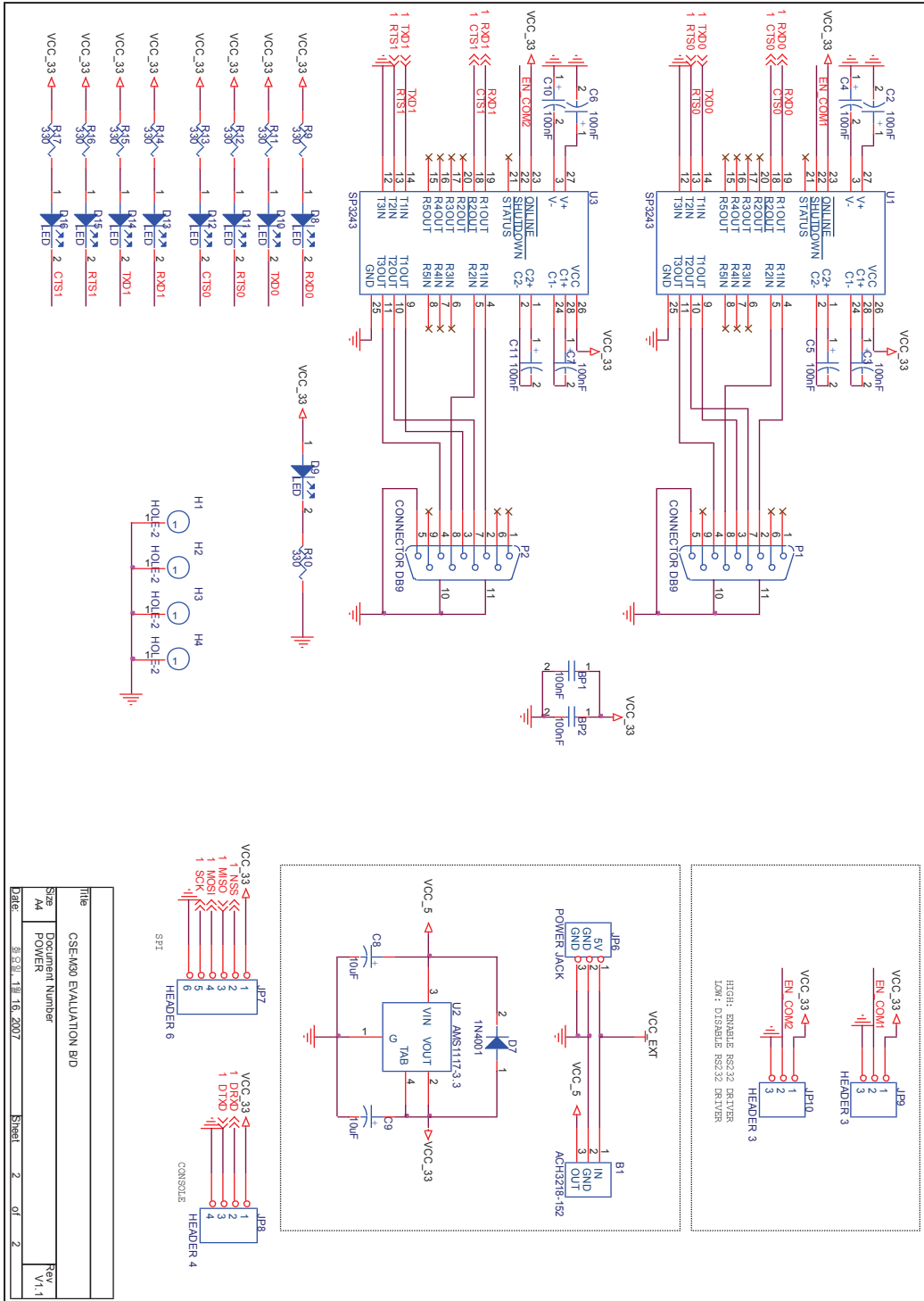
It resets CSE-M32 by putting low signal to the RESET pin of CSE-M32.

9.4 System LEDs classified each mode

Mode	Name		Color	Status	Description
Common	PWR		Red	On	Supplying the power
Normal	LAN	STS	Yellow	Blinks in every second	Being assigned IP address
				Blinks 4 times in a second	Being not assigned IP address via DHCP or PPPoE
	LAN	LINK	Green	On	Connecting with Ethernet
		LAN_RX	Yellow	Blinks	Receiving data from Ethernet
		LAN_TX	Green	Blinks	Sending data to Ethernet
	SIO1 /SIO2	RXD0/1	Yellow	Blinks	Receiving data from Serial ports
		TXD0/1	Green	Blinks	Sending data from Serial ports
		RTS0/1	Green	On	Available to Receiving data (Using RTS/CTS Flow Control)
		CTS0/1	Yellow	On	Available to Sending data (Using RTS/CTS Flow Control)
	-	CN0/1	Yellow	On	Establishing TCP connection
ISP	-	All (except PWR)	-	Off	Entering ISP mode
Serial Configuration	LAN	LINK/ LAN_RX / LAN_TX/ STS	-	Blinks simultaneously	Entering Serial Configuration mode

9.5 Schematic of the evaluation board





Title		CSE-M30 EVALUATION BID	
Size	Document Number		
A4	POWER		
Date	Rev	Sheet	of
2007.16.16	V1.1	2	2